

TM9960 Touchpad



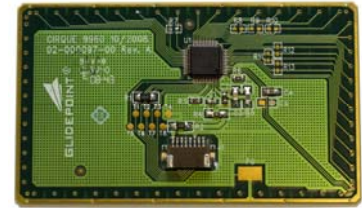
Our TM9960 is designed for use as an embedded PS/2® input device. Its dimensions are larger than the industry standard for the notebook computer pointing devices, making it ideal for integration into a wide variety of products. We also offer custom overlays to match your design requirements.

applications

- Keyboards
- Keypads
- Mouse alternatives
- Industrial control panels
- Medical instruments
- PC peripherals
- Point-of-sale devices
- Laptops

features

- Larger than notebook computer industry-standard
- PS/2 (8-pin FFC connector) compatibility
- Low power consumption
- Easy product integration due to thin, lightweight design
- No maintenance required – Sealable design is immune to moisture, dust and abuse
- Superior navigation and high responsiveness
- Windows®-compatible embedded features mean no additional drivers needed

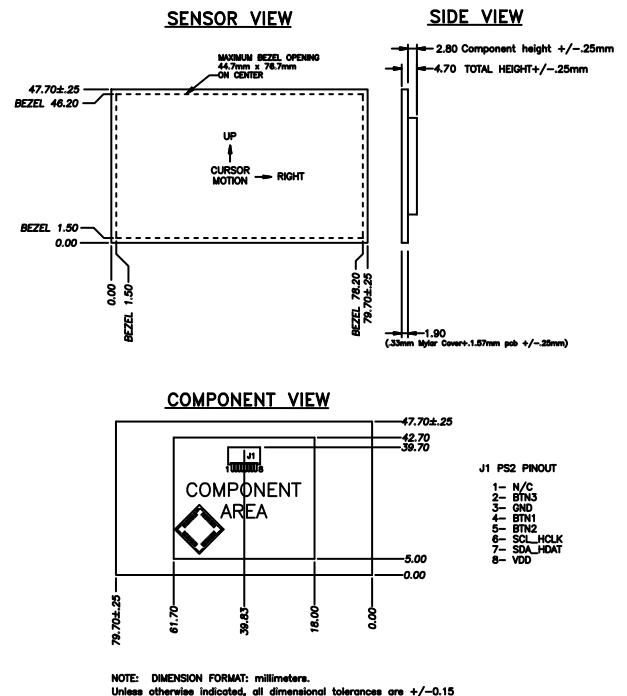


Using our patented GlidePoint® technology, the TM9960 is immune to moisture, allowing it to function properly even with water droplets present on the touchpad's sensing surface. Power efficiency of any application is improved with an "idle mode," where the touchpad's current draw is reduced when a finger is not touching its surface.

The TM9960 is fully compatible with standard Windows® mouse drivers. No additional driver is required to activate many of its advanced features. Configurable options on the module allow for taps (function as left-button clicks), corner-taps (function as right-button clicks), vertical scroll (functions as mouse scroll wheel) and more, depending on the specific application. For applications requiring greater flexibility, Cirque offers a Windows® driver, which allows users to enable and disable advanced features, personalize settings and reprogram buttons.

For custom functionality at the product design stage, we offer software that allows OEMs to enable, disable or personalize advanced settings and/or reprogram the touch sensitive area.

Interface	PS/2 with 8-pin FFC connector
Operating Systems	Compatible with standard mouse drivers Cirque Driver available for Windows® XP and Vista
Button Support	Three (3) mechanical buttons
Sensor Overlay	Multiple options available
Physical Parameters	
Width	79.70 mm ± 0.25
Height	47.70 mm ± 0.25
Thickness	4.70 mm ± 0.25 mm with all components
Weight	< 14 g
Active Sensing Area	76.70 x 44.70 mm
Voltage	5V ± 10% (3V ± 15% optional)
Current	3.0 mA (active) 1.5 mA (idle) 50 µA (sleep) 10 µA (shutdown)
Operating Temperature	-40° to 85° Celsius
Operating Humidity	5% to 95% relative humidity (condensing)
Storage Temperature	-55° to + 150° Celsius
ESD	15 kV when properly mounted in bezel
Environmental	EMI tolerant and manufactured RoHS compliant
Available Accessories	8-pin FFC cable available upon request



Our knowledgeable and helpful sales team is ready to answer all of your question. Please call toll-free 1-800-GLIDE-75 or visit www.cirque.com



CIRQUE CORPORATION

Input Solutions At Your Fingertips
© 2006-2009 TM9960 Rev. G

2463 South 3850 West, Suite A, Salt Lake City, Utah 84120 U.S.A.
Phone: (801) 467-1100 • Fax: (801) 467-0208 • www.cirque.com